

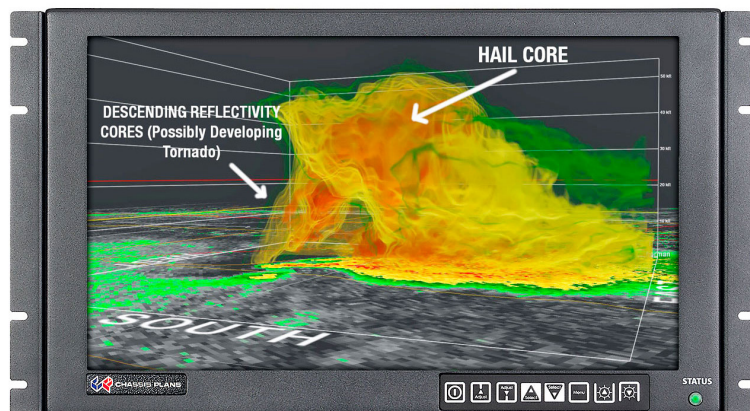
CPX

6RU WIDE
SCREEN LCD
MONITOR

RUGGED DISPLAY

The CPX2-173 provides a high performance, rack mount 6U TFT Wide Screen LCD display with 1920 x 1080 resolution. Offered is a standard brightness or daylight viewable hibright LCD. Various LCD enhancements such as an oleophobic antireflective and/or ITO EMI bonded overlay and a RhinoTouch touch screen can be specified.

Electrical components are selected for their inherent ruggedness and revision control, and there is locking stainless hardware throughout.



Chassis Plans' 2U-5U rackmount computer systems are designed with a removable back plate that allows a 12V power cord to run from the computer's power supply to a display or keyboard video monitor. This optional feature, the Exterior Power Jack, is available for this monitor. By running the display with the computer systems' power supply, this Exterior Power Jack option can provide many benefits:

- Reduction in the number of required cables
- Elimination of additional equipment, i.e., a power brick
- Reduction in total system weight and cost

To enjoy these benefits, power up your new display with a Chassis Plans' server.

APPLICATIONS

- Airborne Operations
- Land-based Operations
- Seaborne Operations
- Telemetry
- Diagnostics
- Simulation
- C4ISR
- Communications
- Imaging
- Persistent Surveillance
- UAVs
- Automation
- Severe Environment Operations

FEATURES

- Lightweight aluminum construction
- Long-life LCDs
- Optional resistive touch screen

Who We Are

CP Technologies designs, fabricates and integrates standard and customized high-performance computing platforms and LCD monitors for military, industry, and commercial applications.

Using COTS components, CP Technologies provides solutions for customers who need reliable systems that will operate in a variety of harsh conditions and who require revision control and hardware consistency for multi-year programs.

CP Technologies is an ITAR Registered and ISO 9001:2015 Certified business that has been operating in Southern California for over twenty years.

Assembled in the USA
ISO 9001:2015 Certified
ITAR Registered

CP Technologies
10840 Thornmint Road
San Diego, CA 92127
combatproven.tech
858.571.4330



TECH SPECS

MONITOR SPECIFICATIONS

SCREEN DIAGONAL	17.3"
CONTRAST RATIO	600:1
VIEWING ANGLE	80° (L/R/U/D)
RESPONSE TIME	40ms
NATIVE RESOLUTION	1920 x 1080
BRIGHTNESS	400 cd/m2 (1000 cd/m2 with Hi-Bright)
BACKLIGHT	LED
COLORS	16.7M
POWER INPUT	AC input 85 to 264VAC, 1275/704 28VCD
POWER DISSIPATION	42 Watts (49 Watts with Hi-Bright)
EXTERIOR POWER JACK	Yes (optional)
SUPPORTED RESOLUTIONS	VGA (640 x 480) WVGA (800 x 480) SVGA (800 x 600) XGA (1024 x 768) SXGA (1280 x 1024) WXGA (1366 x 768) WSXGA+ (1680 x 1050) WXGA (1280 x 768, 1280 x 800, 1440 x 900) HD-1080 (1920 x 1080) WUXGA (1920 x 1200)

	STANDARD	ADVANCED HD-SDI
STANDARD INPUTS	VGA DVI-D PAL/NTSC/SECAM HD-SDI - SMPTE259M, 4.2.2 HDMI 1.3	VGA HD-SDI - SMPTE259M, 4.2.2 HDMI 1.3 Disply Port SDI Re-Clock Loop Output
OPTIONAL INPUTS	Composite HD Component YPbPr SD Component YCbCr	
FEATURES	Image Up-Scaling Image Down-Scaling Picture-in-Picture Memory Buffer Sync on Green/Composite Ethernet Command Protocol Picture-by-Picture Text Overlay Function Variable Aspect Freeze and Zoom Programmable Hotkeys	Image Up-Scaling Image Down-Scaling Sync on Green/Composite Programmable Hotkeys

TECH SPECS



CHASSIS SPECIFICATIONS

DIMENSIONS	19" X 10.47" X 3.2" (482.6mm X 265.9mm X 81.3mm)
SHIPPING WEIGHT	9.7lbs (4.39985kg)
CONSTRUCTION	High-strength 5052-H32 aircraft-grade aluminum
POWDERCOATING	Black per MIL-PRF-24712, Type IV, Class 3, Cardinal C214-BK110 polyester semi-gloss, fine texture
PLATING	Chem-Film per MIL-C-5541F, Class 1A
MOUNTING OPTIONS	Rack mounting, panel mounting, VESA 100

HARSH ENVIRONMENTS

Designed to meet or exceed MIL-STD-810G to the below specifications.

ALTITUDE	MIL-STD-810, Method 500.6
HIGH TEMPERATURE	70°C Operational, 70°C Storage MIL-STD-810, Method 501.6
LOW TEMPERATURE	-10°C Operational, -20°C Storage MIL-STD-810, Method 502.6
HUMIDITY	5-95%, Non-condensing MIL-STD-810, Method 507.6
BLOWING SAND AND DUST	Procedures I and II MIL-STD-810, Method 510.6
TRANSPORT VIBRATION	MIL-STD-810, Method 514.7
BENCH HANDLING SHOCK	MIL-STD-810, Method 516.7

QUESTIONS?

Reach out to us at
combatproven.tech
or call 858.571.4330

ENGINEERED TO YOUR SPECIFICATIONS

- In-house engineering department
- Design and build of rapid prototypes. Experience with solving difficult customer application problems through knowledge of the industry and custom system design and manufacturing capability
- Our Engineers use Solid Works 3D CAD modeling software for mechanical design and thermal simulation
- Design experience with MIL-STD-167, MIL-STD-461, MIL-STD-810, and MIL-S-901, in addition to FCC, UL, CE, and country specific agency requirements

REVISION CONTROL & CONFIGURATION MANAGEMENT

- Our Program Managers will assure your products are revision controlled for the life of the program
- Configuration Management to assure TAA Compliance and system compatibility
- One part number for life of the program
- Counterfeit and obsolescence management

FACILITY AND TEST

- All integration work is performed in a state-of-the-art, ESD-controlled facility
- Our facility has 23,000 sqft and has dedicated 12,000 sqft to manufacturing and 3,000 sqft to engineering
- Operate to anti-static standard ANSI/ESD S20.20-2007 and electronics assembly standard IPC-A-610, Revision E-2010

QUALITY COUNTS

- ISO 9001:2015 Certified
- 100% system inspection before shipment
- All integrated systems undergo a minimum 24-hour system test and burn-in before shipment to the customer
- Assistance with 3rd party verification of system specifications
- 5-year warranty on all servers and 3-year warranty on LCD monitor products
- TAA compliant
- Built in the USA

CP Technologies
10840 Thornmint Road
San Diego, CA 92127